



AirLink Intelligent Gateways + Device Management

Creating an end-to-end wireless solution for transportation, fleet management and field service applications requires intelligent devices at the end point and software and services to manage those devices, as well as the entire solution.

AIRLINK INTELLIGENT GATEWAYS + ROUTERS

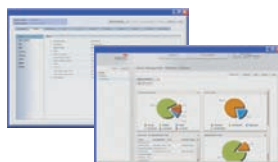
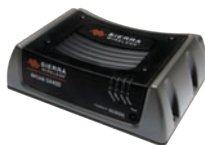
- Multiple connection interfaces
- Rugged design for harsh environments
- Compact form factors
- Fully certified (Regulatory and Carrier approvals)

ALEOS EMBEDDED INTELLIGENCE

- Session persistence
- Embedded security and location protocols
- IP Network Security
- Rules based reporting
- Application Services

HOSTED DEVICE MANAGEMENT

- Comprehensive Configuration
- Hosted Remote Management
- Diagnostics and Troubleshooting
- Connection Manager



Benefits for Fleet Managers

VALUE CHAIN PARTNERSHIPS

Sierra Wireless has forged strong partnerships with key application partners in the transportation segment. By creating alliances with providers of GPS and Field Service applications, mobile VPN and vehicle diagnostics applications Sierra Wireless enables our customers to deploy comprehensive in-vehicle solutions.

REMOTE MANAGEMENT

Configuration parameters and firmware upgrades can be pushed over-the-air with AirLink device management software, resulting in minimal user intervention to reduce vehicle down-time. Diagnostics and monitoring can be done remotely, virtually eliminating out-of-service time and drastically reducing total cost of ownership of the solution.

FIELD SERVICE MANAGEMENT

AirLink products provide a persistent high-speed broadband connection to vital back-end databases. Broadband access enables field workers to optimize their workflow by filing reports, taking payments, and accessing customer information in real-time.

MOBILE RESOURCE MANAGEMENT

Increase productivity, reduce costs, and gain a competitive advantage in managing the mobility of workers, vehicles, and assets. AirLink devices are highly configurable and easily integrated with GPS and MRM applications.

RUGGED DESIGN

AirLink devices are designed for harsh and hazardous environments, and are built to last for many years. With extruded aluminum cases, Mil-STD-810F, e-Mark and IP Ratings, AirLink devices meet the requirements for the transportation industry.

WIRELESS END TO END SOLUTIONS

Sierra Wireless is expanding the wireless world with a comprehensive offering of wireless solutions, including AirPrime™ embedded modules, AirLink intelligent gateways and routers, AirCards™, and AirVantage Services Platform and Solutions. Customers count on us for innovative and reliable performance as well as early access to new cellular technologies for fixed remote and mobile mission-critical utility applications.

AIRLINK INTELLIGENT GATEWAYS + ROUTERS:

- Sessions Persistence
- Remote Management
- Configurable Location Protocol Support
- IP Filtering
- Port Forwarding
- ModBus, DNP3, BSAP, DF1, etc
- Events Reporting
- IPsec VPN

AIRLINK DEVICE MANAGEMENT

The Sierra Wireless AirLink management suite enables secure, real-time two-way communications for remote and mobile monitoring, control, management, reporting and compliance. Together with ALEOS, AirLink devices simplify configuration and "always-on" "always-aware" communications management across remote fixed and mobile field assets.

- Over-the-Air Configuration
- Comprehensive Remote Management
- Device Troubleshooting and Logging
- Minimize Field Visits
- Lower Total Cost of Ownership

Wireless Solutions for Transportation + Field Service

Transportation + Field Service

In today's economy it's vital for fleet managers to have a real-time view of their fleet while also enabling their field workers to have access to all of the information that they have at their desks.

The end goal for any fleet manager is to reduce fuel consumption, increase efficiencies and better serve their customers and communities.



SIERRA WIRELESS: CONNECTING VEHICLES + MOBILE WORKERS

Sierra Wireless solutions enable secure, real-time two-way communications for remote monitoring, control, management, reporting and compliance. We offer a comprehensive range of intelligent embedded modules, routers and gateways to provide the widest range of device and integration options. Our portfolio assures reliable performance in even the harshest conditions or industrial environments.

Complementing a broad portfolio of modules and intelligent gateways and routers is a comprehensive portfolio of software and services. Sierra Wireless software solutions provide a wide array of device management and configuration capabilities as well as end-to-end solutions management.

For More Information

North America & Asia
Tel: +1 510 624 4200

Europe, Middle East & Africa
Tel: +33 1 46 29 08 00

E-mail:
AirLinkSales@sierrawireless.com



Optimized for Mobile Data and Location Applications

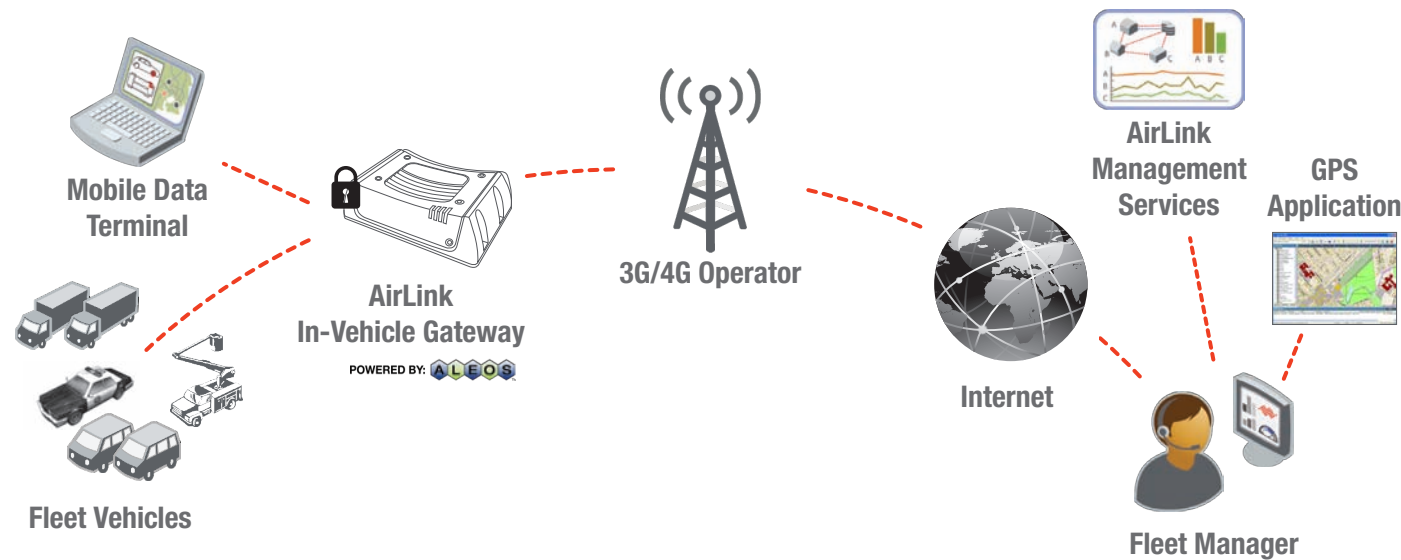
Secure, reliable, real-time two-way communication and accurate GPS location information are all vital aspects for a fleet manager. AirLink routers and gateways provide a rugged, reliable connection in even the most harsh environments.

Working closely with major carriers, Sierra Wireless continues to leverage the latest advances in cellular wireless infrastructure for increased bandwidth, reliability and availability.

ALEOS™ embedded intelligence simplifies configuration and “always-on”, “always-aware” communications management across remote fixed and mobile field assets.

Industry Leadership

- Trusted by hundreds of public safety organizations for over a decade
- Long history of first to market with technology advancements
- Deeply integrated with several 3rd party GPS and mobility applications
- Easily integrated with CAD systems and other dispatch solutions



Solutions Partner Ecosystem

Throughout the value chain, Sierra Wireless works closely with technology developers, carriers and customers to deliver innovative solutions.



Fleet Customers



Law Enforcement



Police Officers require round the clock, real-time access to a large quantity of records and back-end databases (NCIC, DMV, mug shots, etc.). Hundreds of municipal, state, and federal law enforcement agencies trust Sierra Wireless AirLink devices for their mission critical data.

By leveraging Wi-Fi hotspots available in AirLink routers, a police car becomes a fully functional mobile office complete with hand-held citation printers and mobile finger printing devices.

AirLink devices have routinely been integrated with CAD systems to create a powerful dispatch, routing and communications systems for public safety organizations.

Fire + Rescue



Fire trucks are a perfect example of a harsh mobile environment in need of reliable data communications.

Sierra Wireless AirLink gateways and routers provide a rugged, reliable connection for 3G/4G mobile data and location services. By integrating an AirLink device with dispatch systems and routing/AVL software Fire departments can optimize response times and stay fully connected to first responders at all times.

By leveraging an optional WiFi access point, first responders can set-up a communications hub around a incident to enable all communications devices with data access.

Waste Management



The waste management industry has become a very large and complex business. Waste management companies cover very large geographic areas serving thousands of residential and business customers. By integrating AirLink devices with route optimization software, fleet managers can efficiently serve all of their customers. By optimizing their routes with real-time GPS data, waste management companies can serve more customers, while minimizing fuel expenses.

Furthermore, by monitoring I/O sensors, fleet managers can track driver behavior, vehicle health and lift gate/trash compactor use to identify unauthorized waste removal.

Utility Field Service



Utility companies are obligated to provide superior service to their energy customers. Efficiencies in measuring and distributing energy have improved dramatically through the use of Smart Grid technologies. In addition to improvements in production, energy providers have improved customer service by enabling their fleets with on-board communications and location platforms.

The Sierra Wireless line of AirLink devices provide the most rugged and reliable connection available. In addition to broadband data and GPS, the AirLink devices allow fleet and IT managers to track sensors on their vehicles and even monitor the safety of lone workers by integrating 3rd party devices with I/O ports.